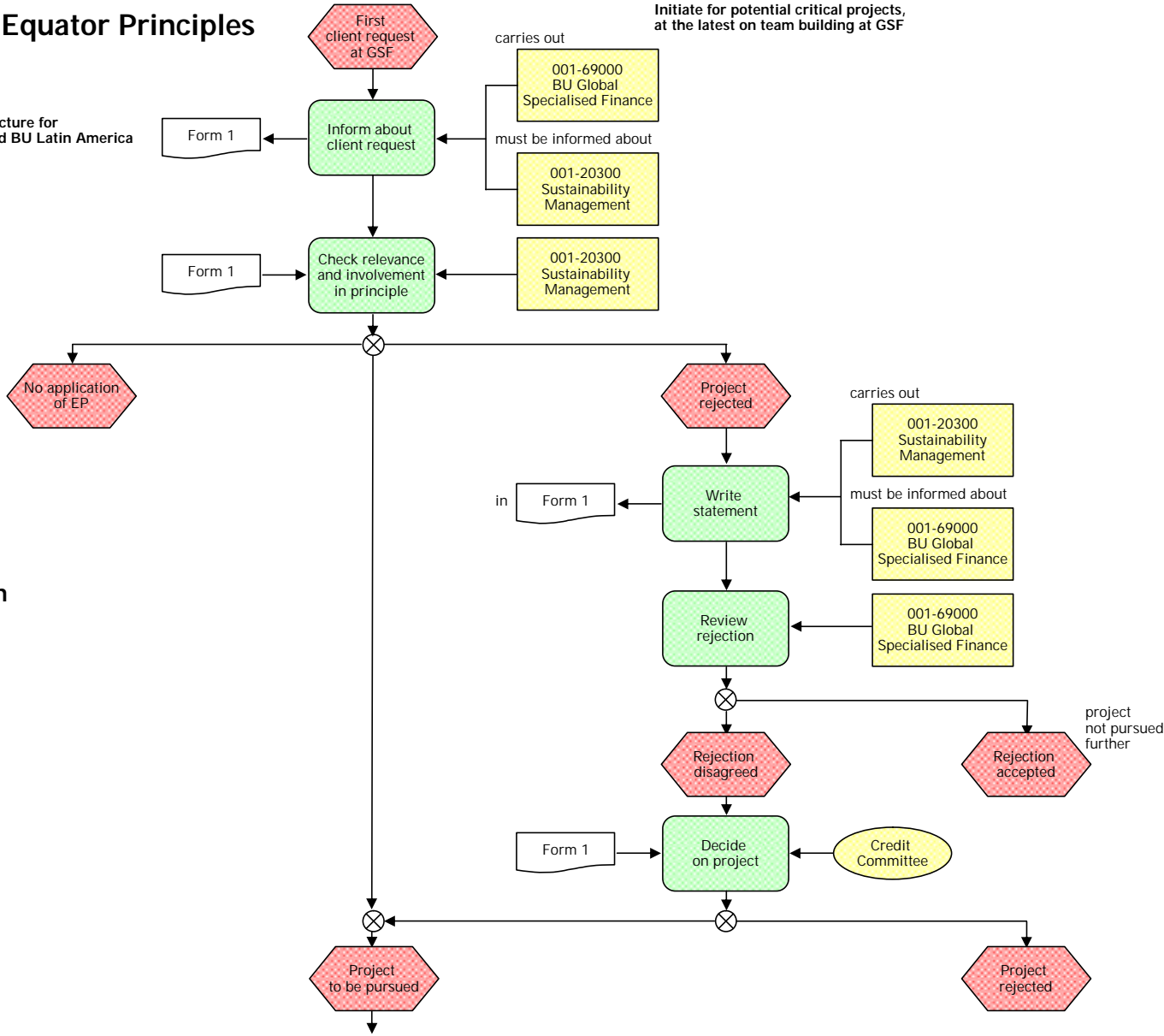


# Screen for Equator Principles

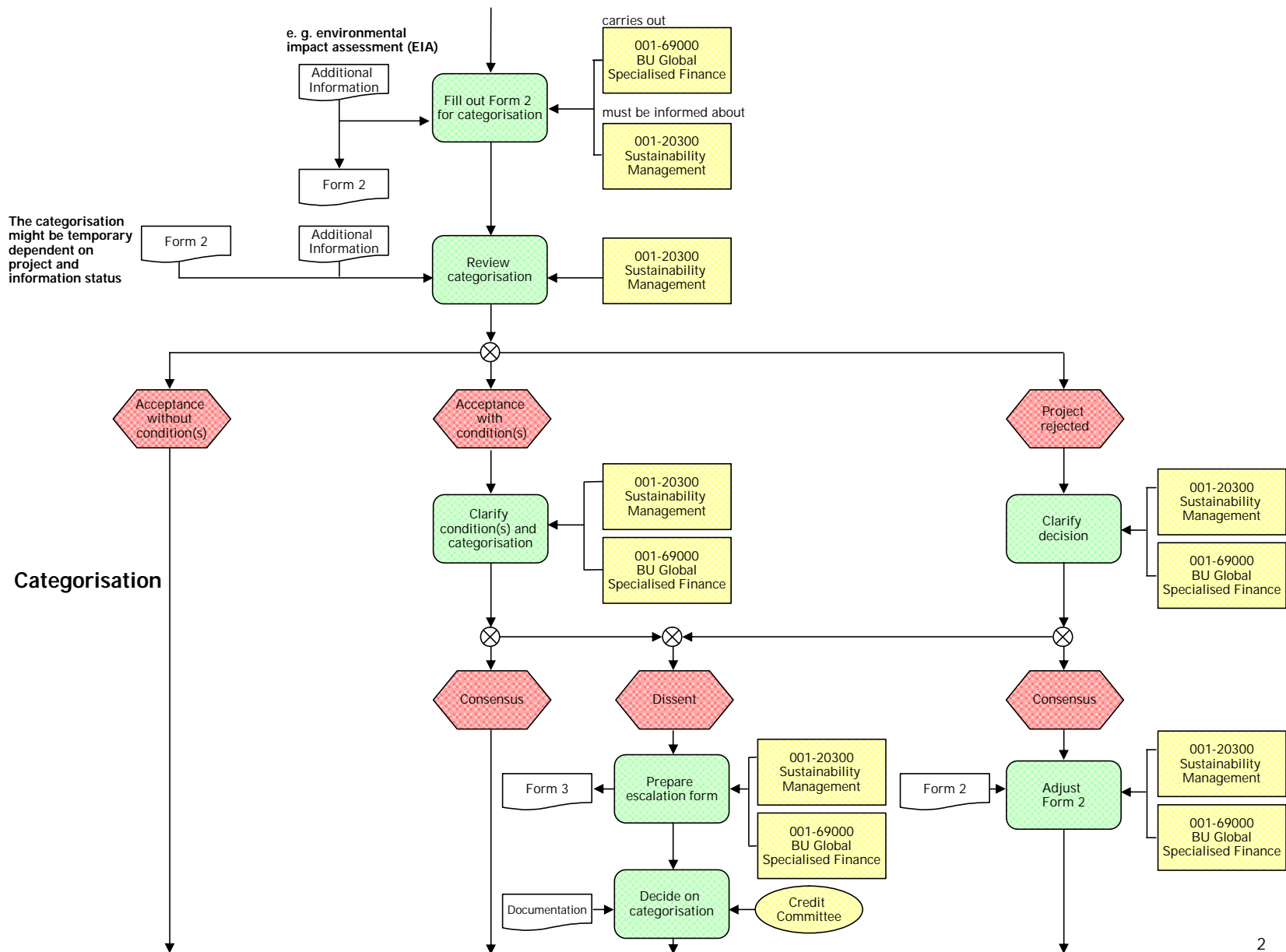
for project finance

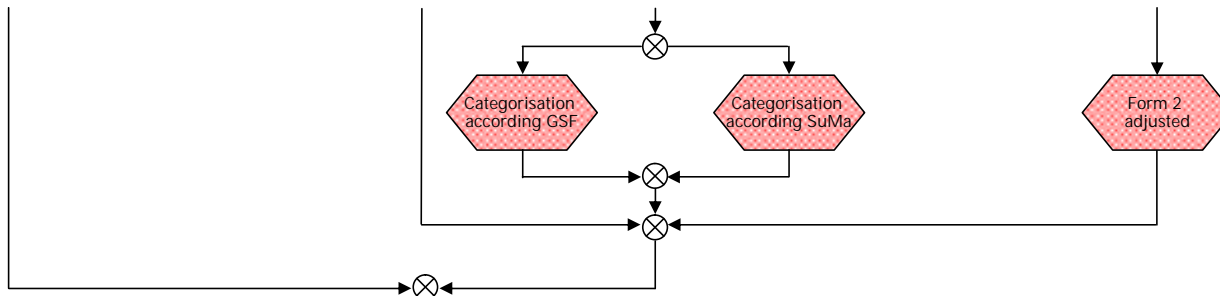
slight changes in Structure for BU North America and BU Latin America

Initiate for potential critical projects, at the latest on team building at GSF



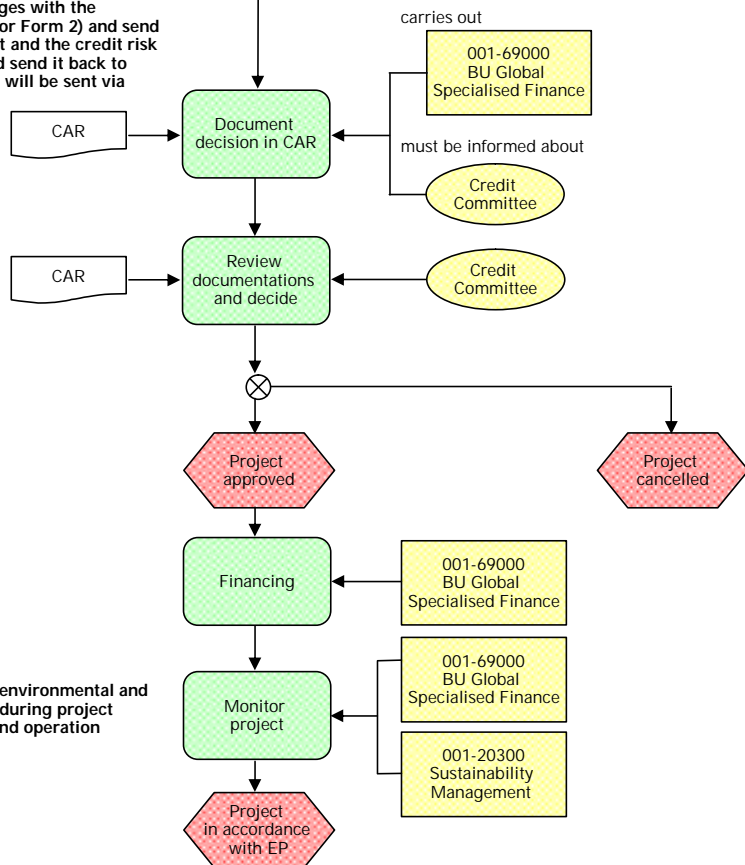
EP application





SuMa will sign first the pages with the signatures (in Form 1 and/or Form 2) and send via Fax to GSF. The project and the credit risk manager sign the page and send it back to SuMa. The complete Form will be sent via e-mail.

### Final Decision



Monitoring of environmental and social aspects during project construction and operation